

Prevent truck bed damage in height restricted areas

Truck Bed Warning System

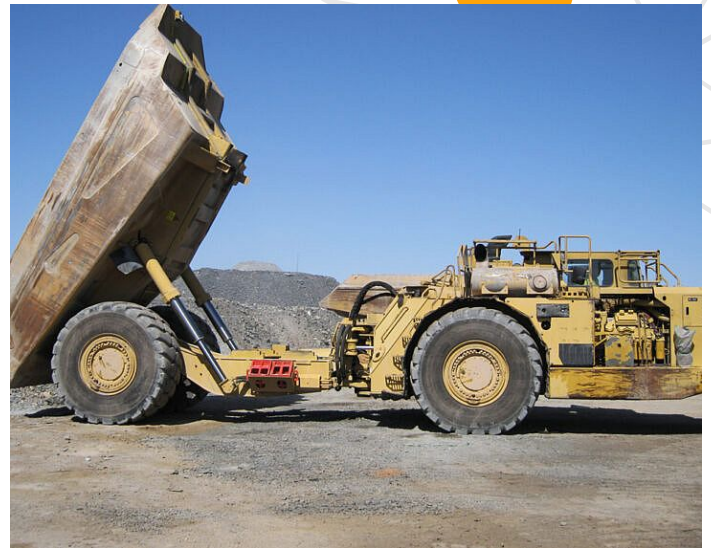
Truck bed damage on underground haul trucks can be prevented with the Muirhead™ Truck Bed Collision Warning system.

The system has been designed to provide operator alerts of impending tray collision when operating in a height restricted working area.

The Muirhead™ Truck Bed Warning system utilizes a programmable ultra sonic sensor with two interval switching outputs that provides the operator with a two-stage visual and audio alarm alert.

Features

- Simple and easy to install
- Two-stage visual and audio alert
- Compact control panel
- Prevents machine tray damage
- Programmable sensor



Parts

APN: 10323

TRAY COLLISION ULTRA SONIC SENSOR

Reference: SBMH0611080US



RCT
Head Office
Unit 1-5/511 Abernethy Rd
Kewdale WA 6105, Australia
sales@rct-global.com

Australia +61 8 9353 6577
Africa +27 83 292 4246
Canada +1 705 590 4001
Central Asia +7 910 411 1174
USA +1 801 938 9214
South America +56 3 5229 9409

Copyright © 2023 Remote Control Technologies Pty Ltd. Images for illustration purposes only. Discover more @ rct-global.com