

Are you getting the most from your haulage fleet?

PAYLOAD RPD-SR2

Over the past 20 years and with over 2000 systems in the field, the EarthTrack Remote Payload system (RPD) has proven to be an invaluable tool, assisting in optimising the efficiency and productivity of earthmoving fleets globally.

The release of the Remote Payload system RPD-SR2 is no exception. The latest addition now logs all truck loads to the loader hardware which can be easily downloaded as CSV file. This data will assist management to monitor, analyse and report machine and fleet Payload Tons.

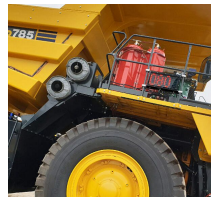
The EarthTrack RPD-SR2 system works by transmitting payload data from the truck to the loader, allowing the loader operator to see the trucks current weight and load distribution within the tray, ensuring the optimal load is achieved.

With the optional single or dual external 'score board' displays the truck payload weights become transparent to the whole mining operation.

The EarthTrack RPD-SR2 can be integrated across all makes and models of machines, giving you the flexibility to download all the loads for the day, week or month from the one location; eliminating the need to download data from each truck individually across a mixed OEM fleet.

The EarthTrack RPD-SR2 utilises the trucks own strut pressure sensors to allow for an even and accurate Payload. With a correct even Payload, the stress on trucks is decreased which maximises machine life and limits unplanned maintenance downtime.

Payload Management Tools assist site operations to achieve safe loading practices and maintain consistent haulage targets more effectively.



Reference: SBET0616001



RCT
Head Office
Unit 1-5/511 Abernethy Rd
Kewdale WA 6105, Australia
sales@rct-global.com

Australia +61 8 9353 6577
Africa +27 83 292 4246
Canada +1 705 590 4001
Central Asia +7 910 411 1174
USA +1 801 938 9214
South America +56 3 5229 9409

Copyright © 2023 Remote Control Technologies Pty Ltd. Images for illustration purposes only. Discover more @ rct-global.com


Caractéristiques

- Empower the loader operators with better weigh distribution across all strut sensors of the truck
- Optional single or dual external scoreboard displays
- Logging of the entire truck fleet payload data at the loaders
- CSV data download from the loaders
- Reduces maintenance
- Improves production
- Better profitability


Specifications

System voltage	12 - 24 volt DC
Operating temperature	-23 - +65 Degrees Celsius
Environmental protection	IP65
Radio frequency	2.4GHz or 470MHz

Pièces

 APN: 11484

CONTROL EXTERNAL DISPLAY PAYLOAD GEN 2

 APN: 12082

CONTROL PAYLOAD TRUCK GEN 2 WITH LOGGING (470MHZ)

 APN: 12175

CONTROL PAYLOAD LOADER GEN 2 WITH LOGGING (470MHZ)

Reference: SBET0616001



RCT
Head Office
Unit 1-5/511 Abernethy Rd
Kewdale WA 6105, Australia
sales@rct-global.com

Australia +61 8 9353 6577
Africa +27 83 292 4246
Canada +1 705 590 4001
Central Asia +7 910 411 1174
USA +1 801 938 9214
South America +56 3 5229 9409

Copyright © 2023 Remote Control Technologies Pty Ltd. Images for illustration purposes only. Discover more @ rct-global.com