

# Prevent tray damage in height restricted areas

## Tray Collision Warning System

Tray damage on underground haul trucks can be prevented with the Muirhead® Tray Collision Warning system.

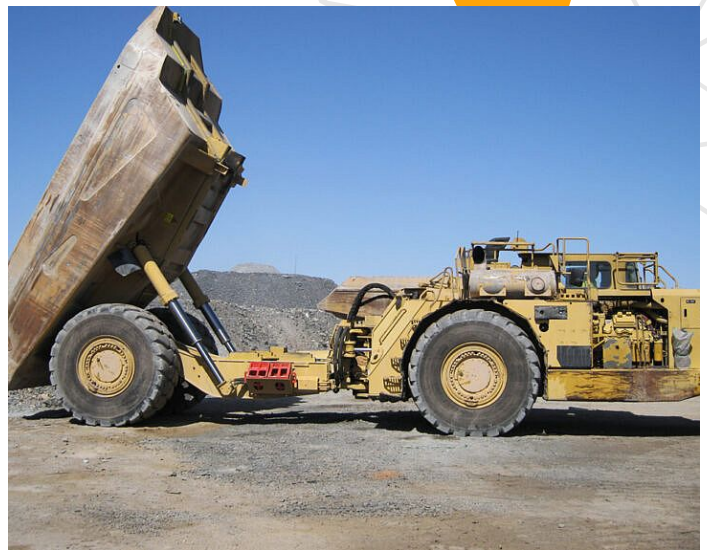
The system has been designed to provide operator alerts of impending tray collision when operating in a height restricted working area.

The Muirhead Tray Collision Warning system utilises a programmable ultra sonic sensor with two interval switching outputs that provides the operator with a two stage visual and audio alarm

alert.

### Caractéristiques

- Simple and easy to install
- Two stage visual and audio alert
- Compact control panel
- Prevents machine tray damage
- Programmable sensor



### Pièces

APN: 10323

TRAY COLLISION ULTRA SONIC SENSOR

Reference: SBMH0611080



RCT  
Head Office  
Unit 1-5/511 Abernethy Rd  
Kewdale WA 6105, Australia  
sales@rct-global.com

Australia +61 8 9353 6577  
Africa +27 83 292 4246  
Canada +1 705 590 4001  
Central Asia +7 910 411 1174  
USA +1 801 938 9214  
South America +56 3 5229 9409

Copyright © 2023 Remote Control Technologies Pty Ltd. Images for illustration purposes only. Discover more @ rct-global.com