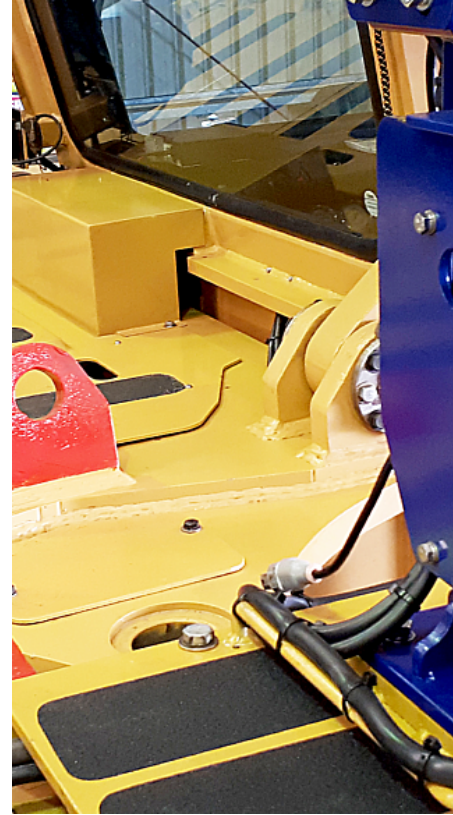


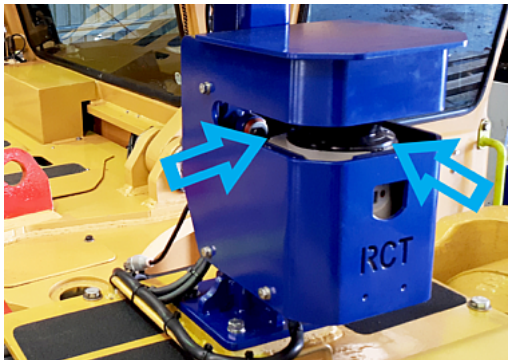
Scanner Protection and Cleaning

Cover the scanner before washing the machine

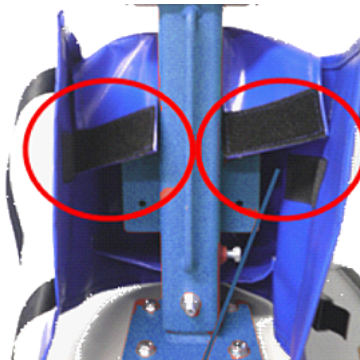
- Apply the cover when washing or high pressure cleaners are used.
- Apply the cover when the machine is parked.
- Failure to properly maintain the scanner may void the scanner warranty.



Installing the cover



1. Scanner window must be protected from high pressure water, grease and dirt when cleaning the machine with high pressure equipment.



2. Fit sock over scanner assembly from the front and fold down the tabs with the Velcro strips. Connect the Velcro strips on the rear flaps with those on the tabs.



3. Ensure it is secure by fixing the straps together.

Ссылка: SBCM0511074



RCT
Head Office
Unit 1-5/511 Abernethy Rd
Kewdale WA 6105, Australia
sales@rct-global.com

Australia +61 8 9353 6577
Africa +27 83 292 4246
Canada +1 705 590 4001
Central Asia +7 910 411 1174
USA +1 801 938 9214
South America +56 3 5229 9409

Copyright © 2023 Remote Control Technologies Pty Ltd. Images for illustration purposes only. Discover more @ rct-global.com

Scanner lens cleaning

The following steps need to be carried out for the front and rear scanner lens at each remote pre-start.

1. Wipe using a clean soft cloth to remove dust. Note: Avoid using a back-and-forth motion.
2. Wipe using lens cleaning towelettes (safety glass wipes).
3. Wipe using a clean cotton cloth.
4. Inspect lens, if grease or oil can still be seen, repeat steps 2 & 3.

If all grease/oil is not removed, the scanner will not run optimally and "scanner blinded" messages will occur frequently.



Комплектующие

▼ APN: 10041

PROTECTIVE SCANNER COVER

Ссылка: SBCM0511074



RCT
Head Office
Unit 1-5/511 Abernethy Rd
Kewdale WA 6105, Australia
sales@rct-global.com

Australia +61 8 9353 6577
Africa +27 83 292 4246
Canada +1 705 590 4001
Central Asia +7 910 411 1174
USA +1 801 938 9214
South America +56 3 5229 9409

Copyright © 2023 Remote Control Technologies Pty Ltd. Images for illustration purposes only. Discover more @ rct-global.com