

Close up views of the work area from a safe distance area

9" - 4 Camera DVR Wireless Kit

Working on heavy equipment is potentially hazardous at times. The AusProTec™ 9" DVR Wireless Camera is designed to make tasks safer and easier to undertake. It provides personnel clear and closer views of the work area and task at hand. It also eliminates the need for personnel to be in the high risk area; reducing workplace health and safety risks.

The kit comes with magnets, sturdy mounting brackets and rechargeable battery pack allowing the camera to be positioned anywhere prior to the work being commenced.

With a strong digital signal, the AusProTec™ DVR Wireless Camera is built to withstand mining and industrial machinery, it's easy to install as there is no need to run cables through machinery.

If a hard mounted solution is required, the camera can be wired directly to localised machine power, such as the rear lights.

Note: The DVR Wireless Camera Kits are a standalone wireless system, therefore it is not dependent on a site's network.



Reference: SBAP0520002



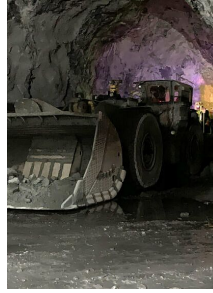
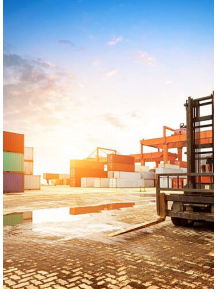
RCT
Head Office
Unit 1-5/511 Abernethy Rd
Kewdale WA 6105, Australia
sales@rct-global.com

Australia +61 8 9353 6577
Africa +27 83 292 4246
Canada +1 705 590 4001
Central Asia +7 910 411 1174
USA +1 801 938 9214
South America +56 3 5229 9409

Copyright © 2023 Remote Control Technologies Pty Ltd. Images for illustration purposes only. Discover more @ rct-global.com

Features








- Up to 100m (328ft) transmission distance
- Picture image: horizontal, vertical, mirror, and normal
- View image: single, dual, quad, and H-Shape
- Easy to use touch button functionality
- Supports 1 x 128Gb SD Card AVI format real-time recording, video playback
- Backlit monitor controls for night vision
- Waterproof camera housing
- 20m night vision distance
- Built-in 2.4GHz -2483.5GHz digital wireless transmitter
- 28 infrared lights
- 120° lens angle



Specifications

Monitor	
Transmission distance	100m (328ft) clear line-of-sight from camera
Picture image	Horizontal, vertical, mirror, and normal
View image	Single, dual, quad, and H-shape
Free operating voltage	DC10-32V
Contrast ratio	500:1
Aspect ratio	16:9
Colour system	PAL/NTSC (Auto)
Display resolution	800 x 3(ROB) x 480(H)
System power consumption	Max 6W
Operating temperature	-20°C to +70°C (-4°F to 158°F)
Storage temperature	-30°C to +80°C (-22°F to 176°F)
Dimensions	234mm x 158mm x 40mm (9.21" x 6.22" x 1.57") without mounting and sun visor
Camera	
Lens angle	120°
Waterproof housing	IP69K
night vision distance	20m (65.6ft)
Horizontal resolution	500TV lines
TV system	Pal / NTSC
Operating voltage	DC10-32V
Current consumption	Max 250mA@12V/140mA@24V
Minimum illumination	0.1 Lux (day), 0 Lux (with IR)
Video output	1.0vp-p.750hm
Transmitting output power	17dBm transmitting speed: 4Mbps
Backlight compensation	Auto
Operating temperature	-20°C to 70°C (-4°F to 158°F)
Storage temperature	-30°C to 80°C (-22°F to 176°F)

Parts

 APN: 15807	KIT CAMERA WIRELESS 4 CAMERA DVR
 APN: 15808	REPLACEMENT BATTERY PACK TO SUIT WIRELESS CAMERA SYSTEM
 APN: 15809	LOOM TO SUIT 15807 CAMERA KIT 0.5M
 APN: 15810	9" MONITOR TO SUIT WIRELESS CAMERA SYSTEM
 APN: 15811	REPLACEMENT CAMERA PACK TO SUIT WIRELESS CAMERA SYSTEM
 APN: 15838	CONNECTOR 2 X 2.1A DUAL USB
 APN: 15874	MOUNTING KIT TO SUIT 15810 MONITOR (RAM MOUNT)

Reference: SBAP0520002



RCT
Head Office
Unit 1-5/511 Abernethy Rd
Kewdale WA 6105, Australia
sales@rct-global.com

Australia +61 8 9353 6577
Africa +27 83 292 4246
Canada +1 705 590 4001
Central Asia +7 910 411 1174
USA +1 801 938 9214
South America +56 3 5229 9409

Copyright © 2023 Remote Control Technologies Pty Ltd. Images for illustration purposes only. Discover more @ rct-global.com