

Fuel savings across all mobile fleet

Fuel saving devices

Fuel consumption savings across all mobile fleet is now a key KPI.

Most mine managers want to reduce costs of their operation and they see the reduction in fuel as a key target area.

But the question on their minds is how do I save fuel without affecting machine operation and performance?

The Muirhead Fuel saving devices do just this.

They are designed to interface into machine operating systems and automatically save fuel without affecting machine productivity.

Excess idle timers - prevent excessive unnecessary idling.

Power Economy Bypass - For Komatsu 787 and 785 haul trucks ensures correct use of the power economy modes.

Speed Limiters - Ensure constant speed when hauling and removes over acceleration.

RPM Limiting - Ensures the correct power is supplied to perform hoist control.

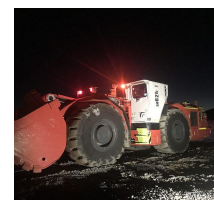
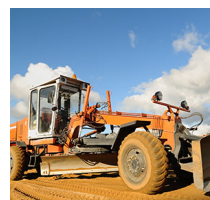
Idle Timers - prevent engine and turbo damage but also can be programmed so idle for the correct machine type.

The simple solution to achieve up to 10% savings on fuel is the Muirhead Fuel saving product range.

All systems are simple to install and require very little maintenance.

Features

- Simple to install and maintain
- Suitable for all machine types and brands
- Multi Voltage
- Immediate results
- Machine productivity not sacrificed



Reference: SBMH1115049



RCT
Head Office
Unit 1-5/511 Abernethy Rd
Kewdale WA 6105, Australia
sales@rct-global.com

Australia +61 8 9353 6577
Africa +27 83 292 4246
Canada +1 705 590 4001
Central Asia +7 910 411 1174
USA +1 801 938 9214
South America +56 3 5229 9409

Copyright © 2023 Remote Control Technologies Pty Ltd. Images for illustration purposes only. Discover more @ rct-global.com

Parts

| | |
|--------------|--|
| 🔗 APN: 7290 | KIT SPEED LIMITER GENERIC FBW DUAL TPS |
| 🔗 APN: 11322 | ELECTRONIC BRAKE APPLICATION KIT |
| 🔗 APN: 11337 | POWER MODE BYPASS |
| 🔗 APN: 11452 | KIT IDLE TIMER MULTI VOLTAGE |
| 🔗 APN: 12362 | CONTROLLER EXCESS IDLE SHUTDOWN |

Reference: SBMH1115049



RCT
Head Office
Unit 1-5/511 Abernethy Rd
Kewdale WA 6105, Australia
sales@rct-global.com

Australia +61 8 9353 6577
Africa +27 83 292 4246
Canada +1 705 590 4001
Central Asia +7 910 411 1174
USA +1 801 938 9214
South America +56 3 5229 9409

Copyright © 2023 Remote Control Technologies Pty Ltd. Images for illustration purposes only. Discover more @ rct-global.com