

# Safer, smarter speed control of mine site heavy equipment

## HEAVY EQUIPMENT SPEED LIMITERS

Speeding is recognised as a major contributor to heavy vehicle accidents on mine sites around the world. Unfortunately, setting compulsory speed limits does not ensure employees will comply with these rules.

The Muirhead® Heavy Equipment Speed Limiter is designed to interface with the fly-by-wire throttle systems found on all modern earthmoving vehicles used by the global mining industry. The solution guarantees heavy vehicles across your entire fleet are always operated at safe speeds within the mine.

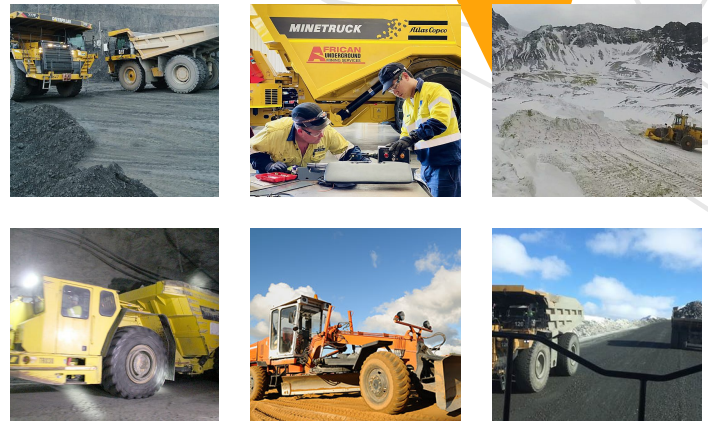
RCT's highly advanced controller can be easily integrated with any OEM fly-by-wire systems to provide smooth, accurate and reliable speed control. These systems can be supplied in a generic or vehicle specific format, and can also be pre-configured prior to dispatch.

The Muirhead® Heavy Equipment Speed Limiter has a proven history of integrating with heavy equipment across mining operations, with thousands currently in use around the world. Installations include to a fleet of Atlas Copco Minetruck MT6020's at a West African underground mine and Komatsu WD600 wheel dozers at Codelco's Andina mine in Chile.

The product can interface with the Muirhead® GPS Zone Controller if required. The Zone Controller allows the vehicle's location to be monitored via GPS and the vehicle's speed adjusted accordingly. Up to 99 zones and 4 speed settings can be utilised in this system.

### Features

- Reduce speed related accidents
- Reduce fuel, running and maintenance costs
- Improve site and operator safety
- Speed limiter program available for fine tuning
- Bluetooth to serial programming link available when on machine programming is unsafe
- Compatible with the Muirhead® GPS Zoning, allowing automatic changing of speed limits based on GPS location



### Heavy earth-moving fleet:

Cat 793F	Cat 793D	Cat 789C
Cat 785C	Cat 777F	Cat 777D
Cat 777B	Cat 773D	Cat AD45
Cat AD55	Cat AD60	Cat 24M
Cat 16M	Cat 16H	Komatsu HD1500-7
Komatsu HD1500-5	Komatsu HD785-5	Komatsu HD785-7
Komatsu WD600-3		

### Other applications:

Mitsubishi Trucks	Fuso Trucks	Kenworth Trucks
Isuzu Trucks	Volvo Trucks	Mack Trucks

Reference: SBMH1021001







RCT  
Head Office  
Unit 1-5/511 Abernethy Rd  
Kewdale WA 6105, Australia  
sales@rct-global.com

Australia +61 8 9353 6577  
Africa +27 83 292 4246  
Canada +1 705 590 4001  
Central Asia +7 910 411 1174  
USA +1 801 938 9214  
South America +56 3 5229 9409

Copyright © 2023 Remote Control Technologies Pty Ltd. Images for illustration purposes only. Discover more @ rct-global.com

## Parts

 APN: 7290	KIT SPEED LIMITER GENERIC FBW DUAL TPS
 APN: 11186	ELECTRONIC SPEED LIMITER (Isolation Relay)
 APN: 11506	KIT SPEED LIMITER GENERIC FBW DUAL TPS WITH ISOLATION RELAY
 APN: 12531	BLUETOOTH USB TO SERIAL LINK

Reference: SBMH1021001



RCT  
Head Office  
Unit 1-5/511 Abernethy Rd  
Kewdale WA 6105, Australia  
sales@rct-global.com

Australia +61 8 9353 6577  
Africa +27 83 292 4246  
Canada +1 705 590 4001  
Central Asia +7 910 411 1174  
USA +1 801 938 9214  
South America +56 3 5229 9409

Copyright © 2023 Remote Control Technologies Pty Ltd. Images for illustration purposes only. Discover more @ rct-global.com