



# INDUSTRIAL PRODUCT RANGE

Logistics | Transport | Civil | Commercial



[rct-global.com](http://rct-global.com)



# CONTENTS

SMARTRACK™ FLEET MANAGEMENT	3
SPEED ZONING & LIMITERS SOLUTIONS	4
SEQUENTIAL SEAT BELT CONTROLLERS (SSBC)	5
DIRECTIONAL CHANGE CONTROLLERS (DCC)	6
ENGINE PROTECTION SYSTEM (EPS)	7
SMARTSPOT AWARENESS TECHNOLOGY	8
ARC LIGHT	9
LINE LIGHT	10
COLOR CHANGE LED MINI LIGHT BAR	11
LED WORK LIGHTS	12
CAMERA VISION SYSTEMS (FOR MAST & REVERSING)	13
MULTI-VIEW CAMERA	14
REAR DETECTION SYSTEMS	15
RCT ONLINE PARTS CATALOGUE	15

# SMARTTRACK™ FLEET MANAGEMENT



FLEET MANAGEMENT SYSTEMS ARE PLAYING AN INCREASINGLY VITAL ROLE IN OPTIMIZING MATERIALS HANDLING OPERATIONS AND INCREASING BOTTOM LINE PROFITS FOR COMPANIES WORLDWIDE. RCT IS MEETING THIS DEMAND WITH ITS FLEET MANAGEMENT SOLUTION, SMARTTRACK™ GLOBAL.

The innovative solution provides relevant, customized information in real-time to employees at every level of the supply chain. The system can be installed on a diverse range of industrial equipment, regardless of make or model.

SmarTrack™ Global can be used anywhere in the world with its multilingual user interface. It delivers machine data from multiple sites; all under one platform, any time, any where. SmarTrack™ Global streamlines operations and simplifies the industrial fleet management process.

It empowers management with information about machine and operator activity, resulting in smarter, profit-boosting decisions.

## Key Features:

GLOBAL REPORTING	PRE-START AND POST-START CHECKLISTS	MULTILINGUAL INTERFACE	OUT-OF-SERVICE	WEIGHT AND SPEED MONITORING	GPS ZONING
------------------	-------------------------------------	------------------------	----------------	-----------------------------	------------

<b>BATTERY VOLTAGE</b> Reports on battery voltage Provides operator warnings for low battery	<b>SEAT MONITORING</b> Report operator seat time Auto-logout when operator is absent from seat	<b>LIVE EMAIL ALERTS</b> Checklist, speed, overweight, seat and buckle violations, impact, machine bypass, licence expiry, service due	<b>"MESSAGE OF THE DAY"</b> Deliver relevant safety information to operator's screen Different messages available depending on ongoing work issues
<b>SERVICE SCHEDULER</b> Receive notifications for service due Schedules based on hours and calendar Customized notification intervals	<b>OPERATOR ACCESS CONTROL</b> Only licenced operators are able to use the equipment via card reader or keypad Identify licence information, expiry dates, and training requirements	<b>CRITICAL OUTPUT</b> Dry NO / NC contacts available to interface with machine and accessories activated by critical events such as checklist, events, and excess idle	<b>EVENT REPORTING</b> Impact GPS location Machine out-of-service on critical impact Posts incident, root cause analysis comments
<b>CONNECTIVITY</b> Cellular/Mobile data communications	<b>WORK INPUTS</b> Capture work time from three inputs such as forward, reverse, and lift	<b>BUCKLE MONITORING</b> Alerts and reports when seat belt is not worn	<b>WEIGHT REPORTING</b> Reports on loaded times, utilization, lift counts and total weight summaries

# SPEED ZONING & LIMITERS SOLUTIONS



## SPEED LIMITERS FOR GREATER CONTROL IN REDUCING INCIDENTS

With speed being one of the major contributors to forklift accidents, the Muirhead™ Forklift Speed Limiter provides a safe reliable solution for controlling speed in most forklift applications.

The system can be supplied to both cable and electronic throttle systems and is designed to interface into machine wiring either as a plug and play or following simple instructions.

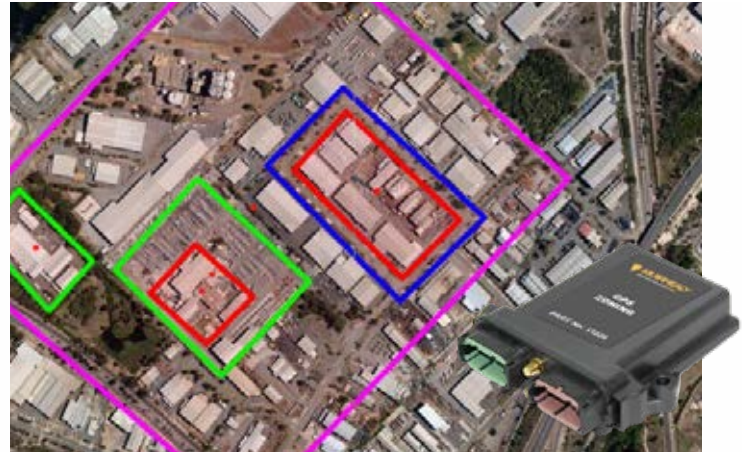
The Forklift Speed Limiter has a built-in safety circuit that prevents overspeed in the event of faulty speed signal or system disconnection.

RCT design forklift speed limiters to suit a wide variety of machine types and models.

The kit can also interface into any of the RCT speed zone systems to enhance the speed control on your site.

### Features

- Increases workplace and forklift safety
- Reduces speed related injuries
- Reduces fuel, running and maintenance costs
- Extends vehicle service life
- Assists in maintaining OHS procedures.
- Secure speed programming



## MACHINE SPEED ZONING KEEPS YOU & MACHINE SAFE WITH CONTROL

The Muirhead™ GPS Zone Controller is the latest in machine zone and location solution.

With up to 50 zones and 4 different outputs, the GPS Zone Controller will automatically change machine speed as it passes between zones.

The zones are configured by the Site Administrator on the SmarTrack™ website.

The systems uses GPS Technology and is suitable for sites that require slow speed inside buildings and higher speeds outside in open areas.

### Features

- Suits larger 'open' sites
- Up to 4 outputs and 50 zones per site
- Low on-going cost
- Flexible - easy to change zone areas
- IP65 rated
- 8-32 V machines
- Machine defaults to low speed if GPS signal is lost
- Zone adjustment through user friendly interface

# SEQUENTIAL SEAT BELT CONTROLLERS (SSBC)



## SEQUENTIAL SEATBELT CONTROLLER FOR ASSISTING OPERATORS

Operator safety is of paramount importance in any operation. Forklift operators neglecting to use a seatbelt are a hazard to both themselves and the operation.

To ensure that the forklift cannot be operated unless the seatbelt is securely fastened, RCT has developed the Muirhead™ Sequential Seatbelt Controller.

The Sequential Seatbelt Controller (SSBC) is one of the most cost effective, smart technology, seat belt interlock systems in the forklift market.

The controller is programmed to assist operators in following the correct sequence when applying their seatbelt. The SSBC prevents operation if the correct sequence is not followed and will immobilize the machine. A visual warning alerts the operator 5 seconds before immobilization.

The kits are designed to suit all forklifts and can also be Customized for plug and play installation for specific brands.

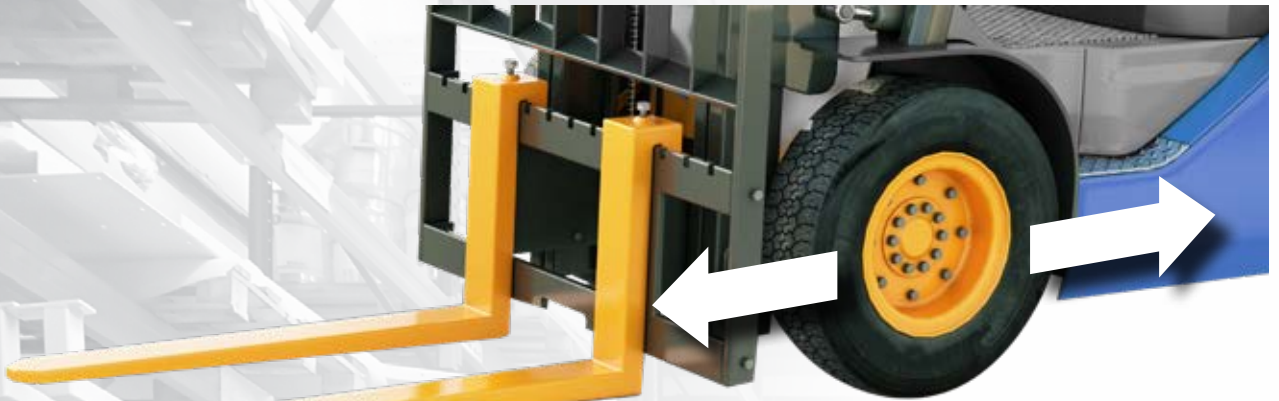
Kits are supplied in low voltage 10 – 30 V and high voltage battery electric 36 – 48 volts. Kits can include seatbelt and buckle if required.



### Features

- Designed to meet Australian Standards
- Quick installation time
- Programmable engine shutdown time
- Fully sealed product to suit all conditions
- Improves operator safety
- Industry proven technology

# DIRECTIONAL CHANGE CONTROLLERS (DCC)



## DIRECTIONAL CHANGE CONTROLLER REDUCE MACHINE WEAR AND TEAR

The Muirhead™ Directional Change Controller (DCC) is designed to help reduce excessive tire wear, transmission damage, damage to cargo and unsightly “skid marks” that can be the result of harsh gear changes.

By sensing the machine ground speed and gear selection, the DCC will inhibit a change of machine direction unless the machine has slowed down to a pre-set threshold whereby the opposite gear can then be selected.

### Frequency Sensor

The DCC senses the machine speed.

### Gear Sensor

The controller senses when forward and reverse gears have been selected.

### Gear Lockout

The DCC will neutralize the directional gear change of the machine until it slows down to reach the pre-set threshold whereby the opposite gear can be selected.

### Features

The DCC can help reduce excessive:

- Tire wear
- Transmission damage
- Skid marks
- Reduces unsafe driving practices
- Compatible with most 12 V and 24 V machines that use electric gear shifts
- Compatible with negative or positive switching via configuration settings
- Configurable gear change threshold – can be set from 0 MPH to any speed

# ENGINE PROTECTION SYSTEM (EPS)



## ENGINE PROTECTION SYSTEM MONITORING CRITICAL ENGINE FUNCTIONS

The Muirhead™ Engine Protection system offers engine protection for machines by monitoring critical engine functions such as oil pressure, coolant level and coolant temperature.

The system pre-warns the operator of critical operating conditions prior to the onset of engine failure. This allows the operator to take action to reduce premature engine failure, damage and costly repairs to the equipment.

The system provides both an audible and visual warning and incorporates additional outputs for return to idle or shutdown modes.

Compact in design and easy to install, the engine protection system is an effective tool in the management of engine protection and engine maintenance for machines.

### Features & Benefits

- Monitors critical engine functions
- Easy diagnosis of engine problems
- User friendly display
- Customized electronic circuitry
- Audible and visual warnings
- Australian made and tested
- Universal applications
- Multi voltage applications
- Tamper proof
- Guards against engine failure
- Reduces costly engine repairs
- Reduces operator responsibility
- Can be customized to suit machine type and operator requirements

# SMARTSPOT AWARENESS TECHNOLOGY

## 'SMARTSPOT' WARNING LIGHT

BE SAFE, BE SMART... BE SEEN



### Specifications

Voltage	9 - 80 VDC
Power	2 x 3 Watt Cree leds
Current Draw	0.49 A @ 9 V 0.027 A @ 80 V
Material	Die cast aluminium housing
Reflector and lens	Poly carbonate
Mounting bracket	Stainless steel
Termination	12" flying lead
Waterproof rating	IP67
Beam Pattern	Spot

Available in blue and red beam, these lights are specifically designed to project a visual caution mark onto the floor of your warehouse, alerting nearby people and other machine users that a vehicle is approaching.



# ARC LIGHT

## FORKLIFT LED ARC LIGHT

BE SAFE, BE SMART... BE SEEN



### Specifications

Voltage	9 - 60 VDC
Power	7 x 3 Watt Cree leds
Dimensions	5" x 6" x 3"
Material	Die cast aluminium housing
Reflector and lens	Poly carbonate
Mounting bracket	Stainless steel
Termination	20" flying lead
Waterproof rating	IP67
Hours lifespan	30,000+
Beam Pattern	Arc

Available in blue and red beam, these lights are specifically designed to project a visual caution mark onto the floor of your warehouse, alerting nearby people and other machine users that a vehicle is approaching.



# LINE LIGHT

## FORKLIFT LED LINE LIGHT

BE SAFE, BE SMART... BE SEEN



### Specifications

Voltage	10 - 80 VDC
Power	5 x 3 Watt Cree leds
Dimensions	4.5" x 3" x 3"
Material	Die cast aluminium housing
Reflector and lens	Poly carbonate
Mounting bracket	Stainless steel
Termination	20" flying lead
Waterproof rating	IP67
Hours lifespan	30,000+
Beam Pattern	Line

Available in blue and red beam, these lights are specifically designed to project a visual caution mark onto the floor of your warehouse, alerting nearby people and other machine users that a vehicle is approaching.



# COLOR CHANGE LED MINI LIGHT BAR

## LED MINI LIGHT BAR

ONE LIGHT, DUAL OUTPUTS



### Specifications

Voltage	12 - 30 VDC
Maximum Current Draw	3 A @ 12 V
Flash Patterns	14
Mounting	4 x M5 Bolts
Lens	Poly carbonate
Housing	Aluminium
Cable Length	1.3ft
Weight	2.2lbs
Light Source	4 x 4 LED Modules
Flash Color	Amber / Green
Ingress Protection	IP67
Operating Temperature	-40°F to 140°F

A trigger wire will interchange the light from amber to green to convey whether the machine is safe to approach.



# LED WORK LIGHTS

## LED COMPACT WORK LAMP

RELIABLE, AFFORDABLE LIGHTING  
FOR HARSH CONDITIONS



### Specifications

Voltage:	10–52 VDC
Output:	550 lumen (4x 2.5 W LEDs)
Current Draw:	0.9 A @ 12 V   0.4 A @ 28 V
Dimensions:	2.5" (H) x 2.5"(W) x 2.5"(D)
Beam Pattern:	36° trapezoid
Beam Distance:	121ft @ 1 lux

Representing the latest in high output lighting technology, the AusProTec™ Compact LED work light is robust, powerful and resistant to shock, vibration, dust and moisture.

With solid-state LED construction and a fully sealed housing (rated to IP67), this LED work light takes durability and reliability to the next level.

This work light features rugged and lightweight die-cast alloy housing, stainless steel mounting hardware, and virtually unbreakable polycarbonate optical lenses. Containing 4 x 2.5 watt LED's, this multi voltage unit has a 550 lumen output making it a perfect solution for your compact lighting application.



# CAMERA VISION SYSTEMS (FOR MAST & REVERSING)

## REAR VISION CAMERA SYSTEMS FOR MAINTAINING CLEAR VISION DAY OR NIGHT!



The Maxi Vision™ camera systems offer machine operators a new perspective on driving and operating their equipment. The range of single and multiple camera systems provide end users with different choices on the best camera system set up to suit their application.

The Maxi Vision™ range of color LCD monitor and camera options are robust in design and are ideally suited to industrial and mining applications. Heavy duty casing and mounting options are also available to suit custom applications.

Widen your view towards machine safety and productivity.

### Components & accessories

Refer to camera kits and components guide

Custom camera kits to suit specific applications available on request. Components differ between kits.



## MAXI VISION™ MAST CAMERA KIT CLEAR VISION REDUCES PRODUCT DAMAGE COSTS



The Maxi Vision™ Camera systems offer forklift operators a new perspective on driving and operating their equipment. The camera systems are designed to enhance safety by improving the operator's vision when performing such tasks as lifting, transporting loads or reversing the forklift. The systems are suitable for use on small or large forklift trucks, battery electric or I/C models.

The Maxi Vision™ range of color LCD monitor and camera options are robust in design and are ideally suited to industrial equipment. Heavy duty casing and mounting options are also available to suit custom applications.

The camera system has been designed to suit forklifts and includes pulleys, heavy duty cabling, special mounting and fittings to enable reliable installation to most battery electric and IC forklifts. So look forward to a safer view on forklift safety whilst improving productivity!

### Features

- Multiple camera options available
- Customized systems available on request
- 12/24 V application
- 36/48 V application with addition of voltage regulator
- Simple to use, reliable in operation and easy to maintain
- Compatible with small or large forklifts
- Clear vision whilst lifting, transporting loads and reversing
- Industry proven reliability



# MULTI-VIEW CAMERA

## MULTI-VIEW 1.3M CAMERA

TWO IN ONE CAMERA



### Specifications

View Angle	Drive: 3"(H) / 2.3"(V) / 3.7"(D)	Rear: 4.7"(H) / 3.5"(V) / 5.5"(D)
Pick-up Device	1.3M Color CMOS camera	
Minimum Illumination	0.2Lux (F=2.4)	
Resolution	1000 TV Lines	
Input Voltage	12 / 24VDC	
Operating Temperature	-4°F ~ 140°F	
Dimensions	1.1"(Ø) x 1.3"(D)	
Weight	1.5oz	

The AusProTec™ Maxi Vision™ Dual View Camera is a parking and driving camera rolled into one. The 1.3M IP68 camera is compact in design and easily adapted into the current Maxi Vision™ camera range. The existing monitor trigger wire is used to switch between modes; eliminating the need for the operator to manually change channels on the monitor itself.



# REAR DETECTION SYSTEMS

## SENTRY PREVIEW REAR DETECTION KITS

BE AWARE OF THE  
SURROUNDING AREA



The Sentry PreView detection kits make reversing mobile machines safe in any environment. It has the ability to detect objects from the face of the radar up to 30 metres (98 feet) and is fully adjustable to fit almost all vehicle types. Sentry PreView accurately identifies the location and velocity of up to 16 people or objects simultaneously and is designed to withstand the harshest environment. The kits come with built in fail-safe alerts that notifies the operator of any radar or communication issues to further ensure they are working with the most reliable object detection system available.

### Features

- 24GHz Radar (up to 20m/98ft range)
- Tested to operate in extreme environments
- Extremely sealed at IP69K
- FMCW + Doppler (Pulse-Doppler)
- Programmable Field-of-View (tracking up to 16 targets)
- Intelligent processor – supports adaptable FOV, filtering algorithms, and communication message formats
- Smaller size allows more flexible mounting options, including flush mount
- Customizable CAN-bus integration
- Ideal for integration with vision systems

## RCT ONLINE PARTS CATALOGUE

RCT catalogue has a huge range of specialized electrical parts including voltage reducers, solenoids, switches, battery connectors, Deutsch kits

### SOLENOIDS

RCT's Solenoids has been compiled to suit your desired application. A choice of type, models and voltages are available.



### VOLTAGE REDUCERS / REGULATORS

Voltage reducers / regulators have been developed to provide multiple solutions for your voltage reducing / regulating needs.



### SWITCHES

RCT range of pressure and temperature switches are designed to optimize your equipment operation.



### COOLANT LEVEL KITS

Monitor engine coolant levels on motor powered equipment to prevent premature engine failure.



### BATTERY ISOLATORS

Supplied by a range of manufacturers such as Cole Hersee, Locksafe, Bosch and Lucas, available in 12 or 24 V, single or double pole and suited for universal application. We have a selection of the most reliable and cost effective isolators available.



### DEUTSCH KITS

RCT stocks a large variety of Deutsch Kits



Discover more: [rct-global.com](http://rct-global.com)

[sales@rct-global.com](mailto:sales@rct-global.com)

AUSTRALIA: +61 8 9353 6577  
AFRICA: +27 83 292 4246  
CANADA: +1 705 590 4001  
RUSSIA / CIS: +7 910 411 1174  
SOUTH AMERICA: +56 3 5229 9409  
USA: +1 801 938 9214

