

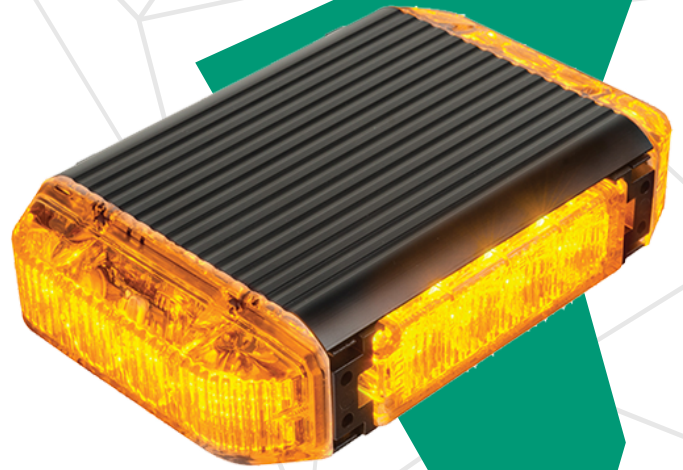
# ONE LIGHT, DUAL OUTPUTS

## Colour Change LED Mini Light Bar

The AusProTec LED colour change light bar is cleverly designed to make surrounding personnel aware of a machine's status.

A trigger wire will interchange the light from amber to green to convey whether the machine is safe to approach.

The low profile and compact design is ideal for installation on small to medium sized machines.



### Features

- Compact in design - 165mm (6.5") long and 44mm (1.73") high
- 14 flash patterns
- Utilising the latest high output LED technology
- Multi-voltage
- Full 350 degree light dispersion
- Environmentally sealed

### Specifications

Voltage	12 - 30 VDC
Maximum Current Draw	3A @ 12 VDC
Flash Patterns	14
Mounting	4 x M5 Bolts
Lens	Polycarbonate
Housing	Aluminium
Cable Length	0.4m
Weight	1kg (2.2lbs)
Light Source	4 x 4 LED Modules
Flash Colour	Amber / Green
Ingress Protection	IP67
Operating Temperature	-40°C to 60°C (-40°F to 140°F)

### Parts

APN: 13470

COLOUR CHANGE LED MIN LIGHT BAR AMBER / GREEN

Reference: SBAP120617



RCT  
Head Office  
Unit 1-5/511 Abernethy Rd  
Kewdale WA 6105, Australia  
sales@rct-global.com

Australia +61 8 9353 6577  
Africa +27 83 292 4246  
Canada +1 705 590 4001  
Central Asia +7 910 411 1174  
USA +1 801 938 9214  
South America +56 3 5229 9409

Copyright © 2023 Remote Control Technologies Pty Ltd. Images for illustration purposes only. Discover more @ rct-global.com